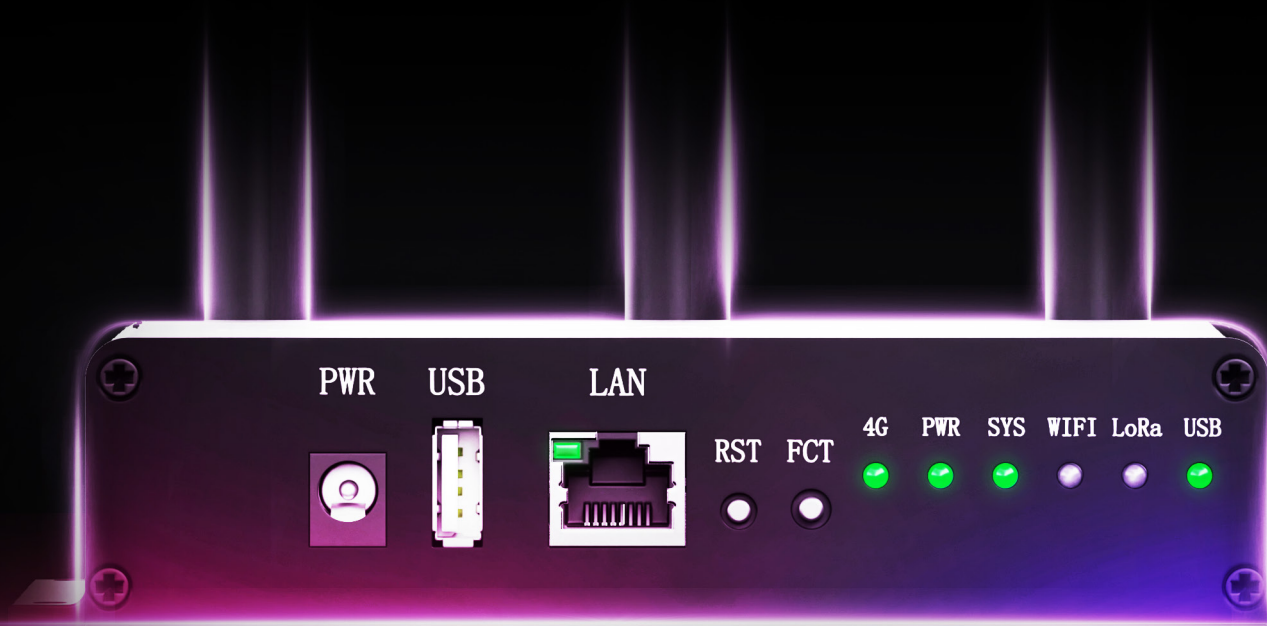


Walrus Gateway

LoRaWAN-ID



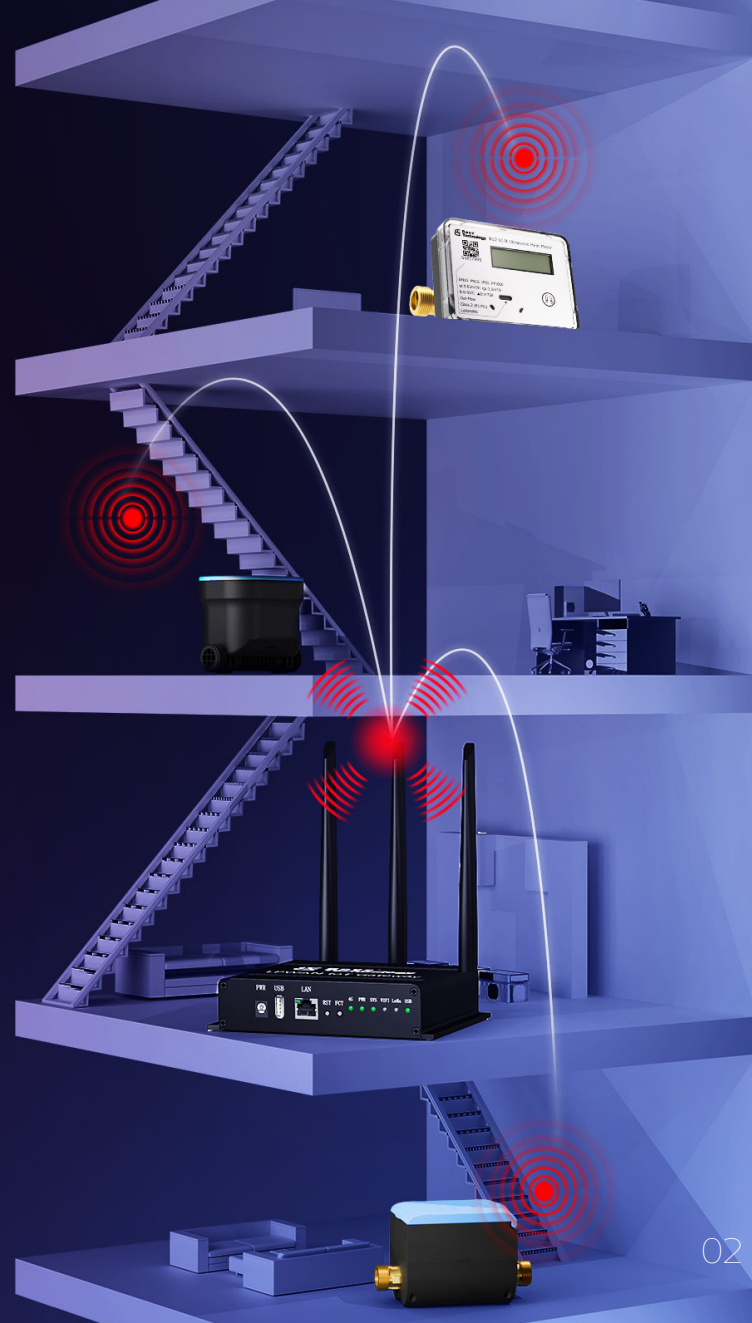
The Walrus-ID is an indoor IoT gateway tailored for LPWAN networks, leveraging LoRaWAN technology. Designed for smart applications, the Walrus is not only easy to install but also highly reliable, making it an ideal choice for customers looking to establish a rapid LoRaWAN network for their LPWAN applications.



Indoor Installation

Boasting remarkable signal penetration capabilities, this gateway is suitable for indoor installation. It can effortlessly blanket multiple floors with a stable signal, ensuring reception of signals transmitted from water meters on other levels.

It optimizes performance but also minimizes costs, making it an ideal choice for customers seeking a high - quality, cost - efficient connectivity option for their smart metering systems.

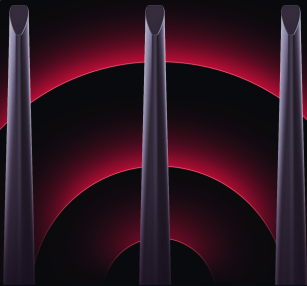


Network Support

The device is equipped with comprehensive connectivity options, including support for both 10/100M Ethernet ports and Wi-Fi, ensuring a reliable and stable connection to the Internet. Regarding upstream communication, it offers a high - degree of flexibility to meet diverse communication requirements.

It supports 8 parallel Multi - Spreading Factor (Multi - SF) LoRa channels, integrates 1 Single - Spreading Factor (Single - SF) LoRa channel, and also features 1 high - speed Gaussian Frequency Shift Keying (GFSK) channel.

Transmitting power up to
25dBm



The receiver sensitivity is
-142dBm @ 300bps



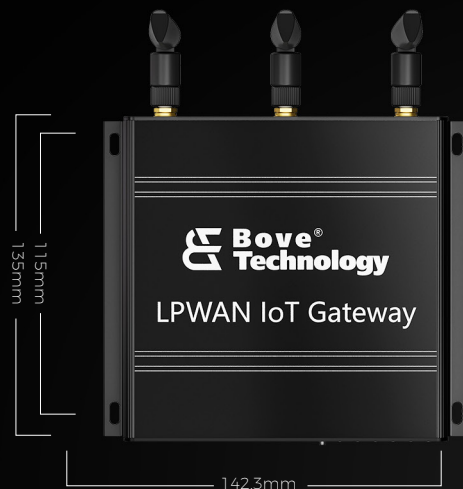
Technical Specification

Power Supply

The Walrus is equipped with a power adapter featuring 5 - level energy efficiency. It has an input voltage range of 90 - 264VAC at a frequency of 50 - 60HZ, and an output voltage range of 11.4 - 12.6V. The power adapter's rated output is 12V/15A.

Sensitivity

Part Number	Bandwidth/kHz	Spreading Factor	Sensitivity/dBm
Walrus-ID-470	125	12	-140
		7	-125
	250	12	-136
		7	-122
	500	12	-133
		7	-119
Walrus-ID-868	125	12	-139
		7	-125
	250	12	-136
		7	-122
	500	12	-133
		7	-119
Walrus-ID-915	125	12	-139
		7	-125
	250	12	-136
		7	-122
	500	12	-133
		7	-119



Walrus Mechanical size

Walrus Package list

Material	PN	Qty
Walrus	Walrus-/D-xxx	1
Adapter	12/1.5A	1
Antenna of WIFI	6dBi High-efficiency omnidirectional antenna	1
Antenna of LoRa	High-efficiency omnidirectional antenna	1
Antenna of 4G (Optional)	High-efficiency omnidirectional antenna	1

Creating an **Eco** Society

Add: Building 23, No. 36, Changsheng South Road, Jiaxing, Zhejiang, China, 314000

www.bovetech.com

+86(0)573 83525916

bove@bovetech.com

*The images in the file are only for showcasing technological effects, and the actual product shall prevail.