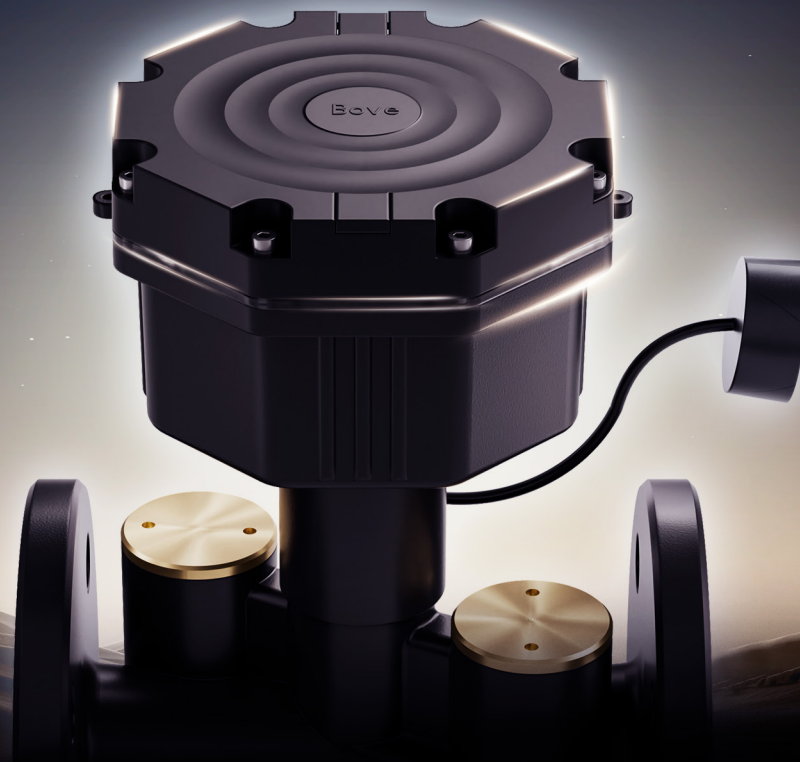


ULTRASONIC WATER METER

A close-up, high-angle shot of a dark, metallic ultrasonic water meter. The meter has a circular face with concentric rings and the 'Bove' logo in the center. It is secured with several screws around its perimeter. The lighting is dramatic, highlighting the metallic texture and the circular design.

B39 VW-M



B39 VW-M is an flange-mounted ultrasonic water meter. It integrates advanced ultrasonic sensing technology and both wired and wireless data transmission capabilities. In industrial and urban water supply fields, it offers highly effective intelligent water management. Its outstanding performance not only saves labor costs but also enhances management efficiency. Thus, it has received wide acclaim among numerous users, becoming a top choice for modern water metering solutions.



Outstanding Performance

Achieving an accuracy of R500, it provides excellent measurement for urban and industrial water applications. With an IP68 waterproof rating, it withstands harsh environments. Boasting a sensitivity of U0D0, it can be installed anywhere, ensuring water metering in diverse scenarios.

Long Lifespan

The pipe section of B39 VW - M is crafted from cast iron, treated with a highly corrosion - resistant electrophoretic baking finish. Paired with its IP68 - rated protection, it can operate steadily in harsh environments for extended periods. Its robust battery setup enables the water meter to function continuously for 10 - 16 years under wireless communication. This significantly enhances the efficiency of water management.



Heat / Cold
Resistance



IP68



UV
Resistance



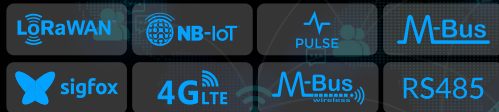
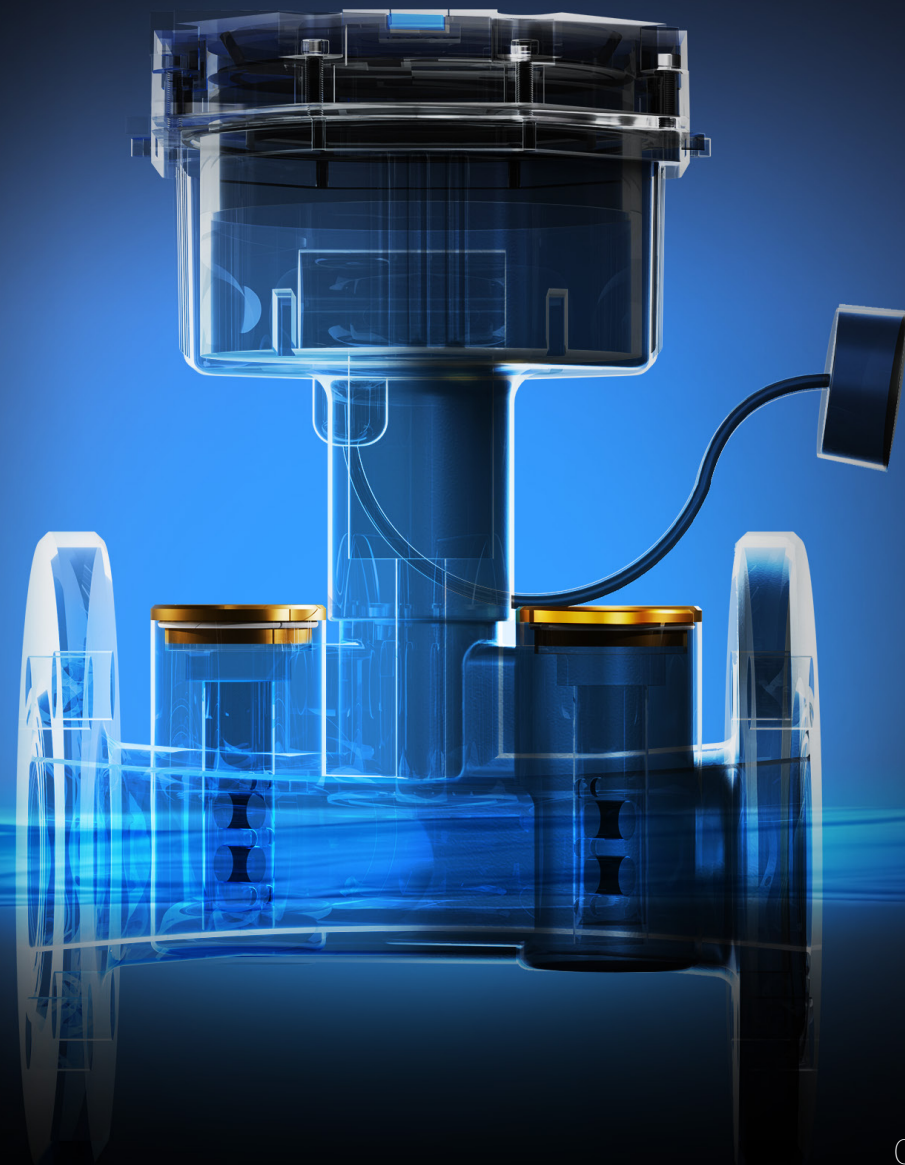
High
Durability

Unique Design

The B39 VW - M features two sets of transducers. This design enables it to accurately meter water even under special conditions like insufficient water pressure. The transducers, thanks to their unique construction, minimize the deposition of impurities from water on their surfaces. Additionally, after long - term immersion in severely poor - quality water, the transducers can be replaced. Whatsmore, a pressure sensor can be installed for water pressure monitoring.

Multiple Communication Interfaces

B39 VW-M supports multiple communication interfaces, both wired and wireless, ensuring seamless adaptability to different installation environment, such as M-Bus, RS485, Pulse, 4-20mA, LoRaWAN, Sigfox, NB-IoT, GPRS, 4G, wMbus, LoRaWAN+wMbus, etc.





COVER

ASA material for UV protection.

PCBA

A strong heart for outstanding water measurement.

BODY

High - strength aluminum alloy material.

PIPE

Cast iron with highly corrosion -resistant electrophoretic baking finish.

SECTIONAL VIEW

TECHNICAL SPECIFICATION



Model	Diameter	Nominal Flow Rate	Transitional Flow Rate	Minimum Flow Rate	Flange Outer Diameter	Length	Connection Bolt
	DN (mm)	Q ₃ (m ³ /h)	Q ₂ (m ³ /h)	Q ₁ (m ³ /h) _{@R500}	mm	mm	Bolt (flange)
DN50	50	25	0.08	0.05	165	200	4×M16
DN65	65	40	0.128	0.08	185	200	4×M16
DN80	80	63	0.2016	0.126	200	225	8×M16
DN100	100	100	0.32	0.2	220	250	8×M16
DN125	125	160	0.512	0.32	250	250	8×M16
DN150	150	250	0.8	0.5	280	300	8×M20
DN200	200	400	1.28	0.8	335	345	12×M20
DN250	250	630	2.016	1.26	405	445	12×M24
DN300	300	1000	3.2	2	460	500	12×M24
DN400	400	1600	5.12	3.2	580	600	16×M27
DN450	450	2500	8	5	640	600	20×M30
DN500	500	2500	8	5	715	600	20×M33
DN600	600	4000	40	25	840	600	20×M36
DN700	700	6300	63	39.375	910	600	24×M36
DN800	800	10000	100	62.5	1025	800	24×M39
DN900	900	16000	160	100	1125	800	28×M39
Temperature			<ul style="list-style-type: none"> • Medium Range: 0.1°C..... 50/ 70°C (T50 /T70) • Ambient temperature: 5~55 °C • Storage temperature: -20~60 °C 				
Materials			Cast Iron				
Metrological Class			Class 2 R250/ R400/ R500				
Maximum Operation Pressure			1.6 MPa				
Pressure Loss			ΔP≤63kPa				
Pressure Stage			PN16				
Protection Class			IP68				
Pressure sensor			Optional				
Battery			10- 16 years service life				
Data Storage			24/ 120 logs, daily/ weekly/ monthly.				
Environmental Requirement			E1, M1, B				
Interface			• Optical port				
Communication			<ul style="list-style-type: none"> • M-Bus •RS485 •Pulse •4-20mA •LoRaWAN •Sigfox •NB-IoT •GPRS •4G •wMbus •LoRaWAN+wMbus 				
Installation			UOD0				
Display and Indication			<ul style="list-style-type: none"> • Unit: L/ m³/ Gal (Optional) • LCD: 9 digits 				
Standard Compliance			<ul style="list-style-type: none"> • EN14154 • ISO4064 • OIML R49 				
Certification			<ul style="list-style-type: none"> • MID • NSF • UV 				

Creating an **Eco** Society

Add: Building 23, No. 36, Changsheng South Road, Jiaxing, Zhejiang, China, 314000

www.bovetech.com

+86(0)573 83525916

bove@bovetech.com

*The images in the file are only for showcasing technological effects, and the actual product shall prevail.